



1/58 Cunningham Terrace Daglish WA

2 🛏 1 🚿 1 🚗

HOME OPEN

SATURDAY 13 JUNE 1.00-1.40PM

Courtyard units are the ultimate in lifestyle and sound investment. This beauty offers a prized end position, rare 30m² north-facing patio and open courtyard space and parkland views as the cream on top! Unit 1 delivers on so many levels and will not last!

In a superb Daglish location near Cliff Sadlier Reserve and nestled in a Parkland setting, you will be blissfully happy here.

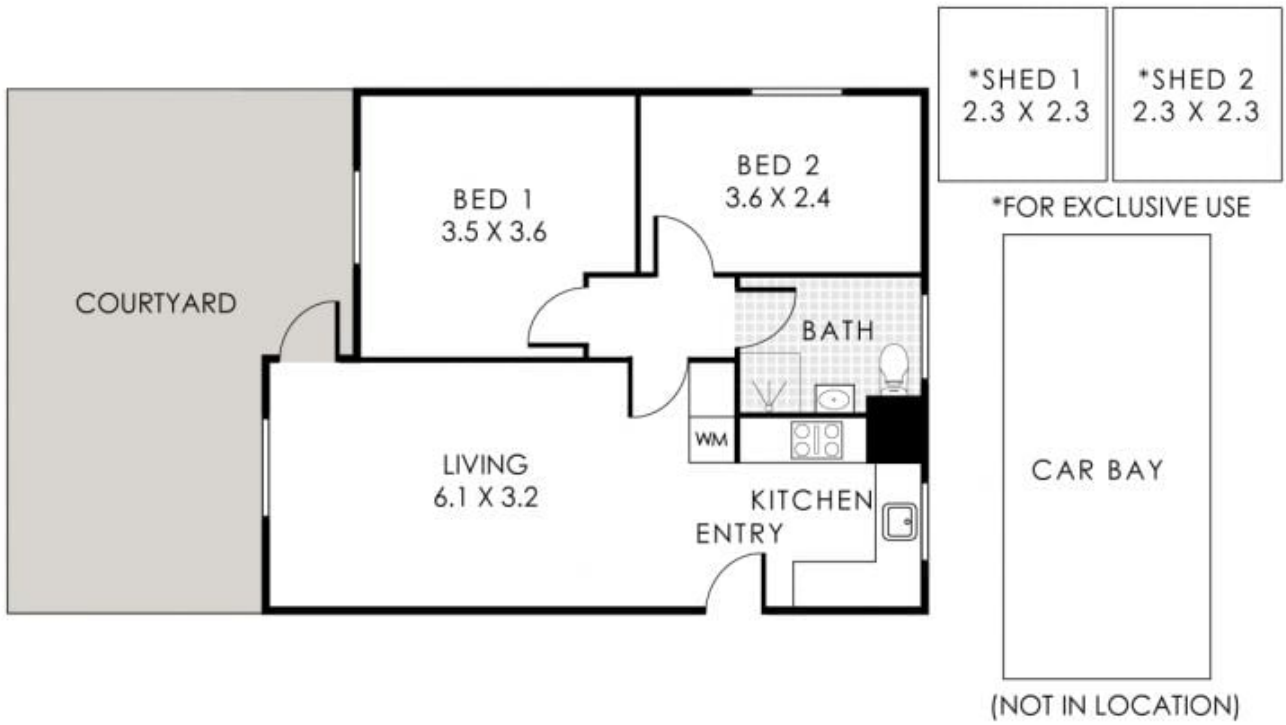
58 Cunningham Terrace is a smaller, quiet group that invites a peaceful existence with views to established tree

[For full version visit the website](#)

Type : Unit
Price : Offers Invited
Building Size : 102 sqm
View : <https://www.abelproperty.com.au/8708574>



Janelle Laretive
08 9208 1999



1/58 Cunningham Terrace, Darglish

Internal 56m² | Courtyard 30m² | Car Bay 16m²

Total Area 102m²



The floorplan is for illustrative purposes only to show the layout of the property. While every effort has been made to ensure the accuracy of the floor plan, all measurements and any other information shown are an approximate representation. Measurements and floor areas do not include or account for wall thickness or half meter wide areas. C/D, Dashed will call for this floor is responsible for any other, complete, measurement or use of an information shown on the floor plan. Not to be used for any other purpose. www.abelproperty.com.au