



Mosman Park

2  1  1 

Welcome to Mosman Park, nestled in between the Swan River and Indian Ocean, this stylish apartment is a peaceful abode surrounded by a plethora of local amenities and attractions.

This is low maintenance living at its best, with great views and walking distance to local shopping centre, cafes, buses, trains, Glyde Street shops and restaurants, and glorious Cottesloe Beach.

The light and bright open plan living and dining area flows effortlessly out to the North-East facing balcony, perfect for entertaining, relaxing and taking in the vast district views.

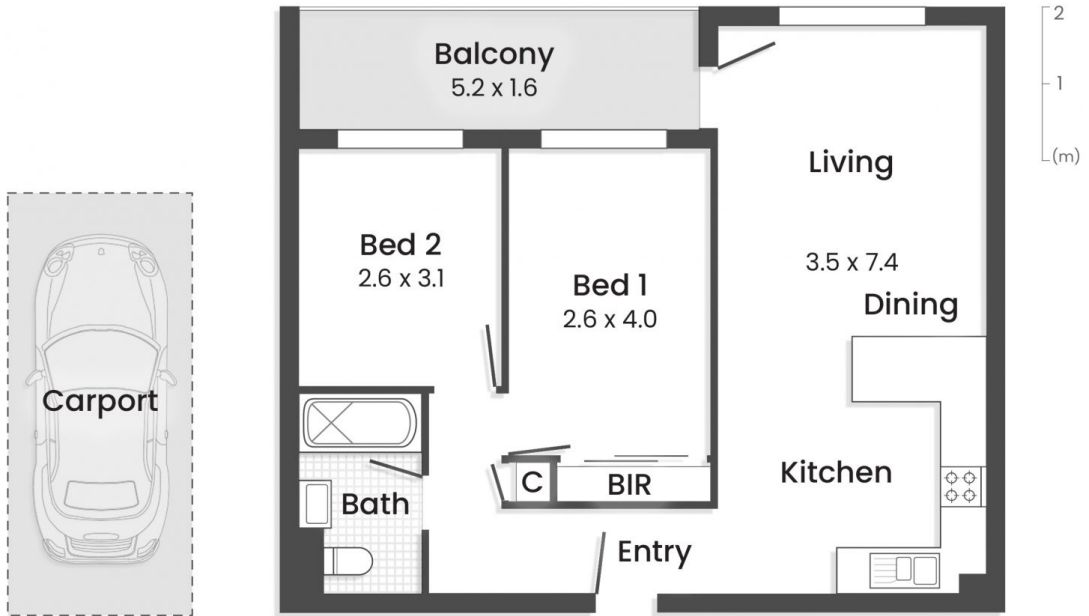
Offering a contemporary kitchen, complete with breakfast

Type : Unit
Price : Contact Agent
Land Size : 65 sqm
View : <https://www.abelproperty.com.au/8697726>



Kyle Peters
08 9208 1999

[For full version visit the website](https://www.abelproperty.com.au)



49/31 Wellington Street MOSMAN PARK

Strata Area 65m²

Dimensions and Areas are approximate. Drawn for presentation puposes only.

info@openpad.com.au © openpad