



6/27 Scalby Street Scarborough WA

3  1  1 

SUN 10 MAY 2.00-2.40PM

Located on the Scarborough Doubleview border, this attractive, street front villa home boasts a wealth of features we all love. Perfectly positioned in a quiet, small group minutes walk to beautiful Bennett Park, the lifestyle on offer is hard to resist.

Offering private, secure side and front courtyards you have plenty of outdoor space for children or pets to play safely, create a garden to enjoy or entertain family and friends.

FEATURES YOU WILL LOVE

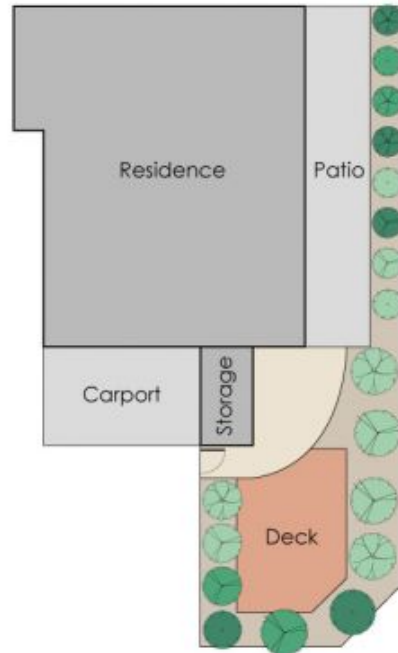
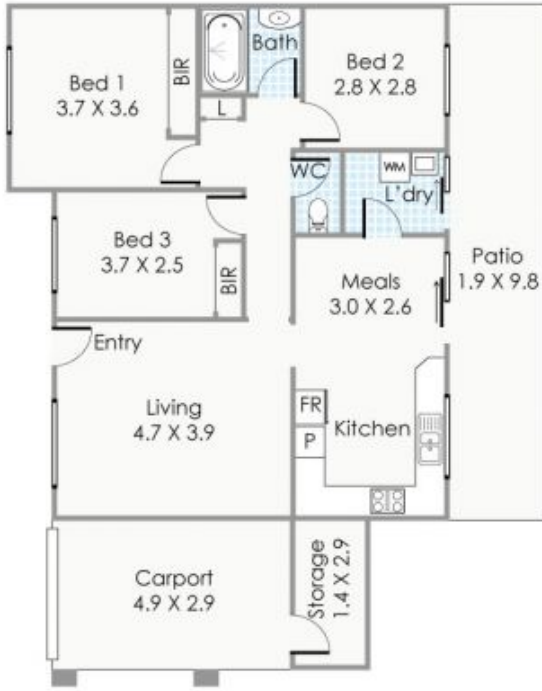
* 2 courtyards bring the outdoors in and add another dimension to the flowing floorplan.

[For full version visit the website](https://www.abelproperty.com.au/86969)

Type : Villa
Price : Offers Invited
Building Size : 181 sqm
View : <https://www.abelproperty.com.au/86969>
35



Janelle Laretive
08 9208 1999



Site Area: 181m²

Approximate Areas

Residence: 83m²
 Carport: 15m²
 Storage: 4m²
 Patio: 12m²

Total Area: 114m²

This floor plan is for illustration purposes only to show the layout of the property. Whilst every effort has been made to ensure the accuracy of this floor plan, all measurements, and any other information shown are an approximate interpretation only. Measurements and total areas do not include or account for wall thickness or roof area under eaves. CIBC Creative will not be held liable or responsible for any error, omission, misrepresentation or use of any information shown on this floor plan.
 www.cibccreative.com.au



6/27 Scalby Street, Scarborough