

7/4 Lee Place Noranda WA

3 1 1

Immaculately presented and very well maintained, this quality 3-bedroom home offers a fantastic opportunity for first home buyers, small families, savvy investors seeking a low-maintenance lifestyle in a convenient location.

From the moment you step inside, you are welcomed by warm wood-look flooring that flows from the entry through to the spacious front living area and into the heart of the home—an open-plan kitchen and dining space designed for easy everyday living.

The kitchen is a real standout, featuring stainless steel appliances, gloss cabinetry and plenty of bench and storage space—ideal for both cooking and entertaining.

Type : House

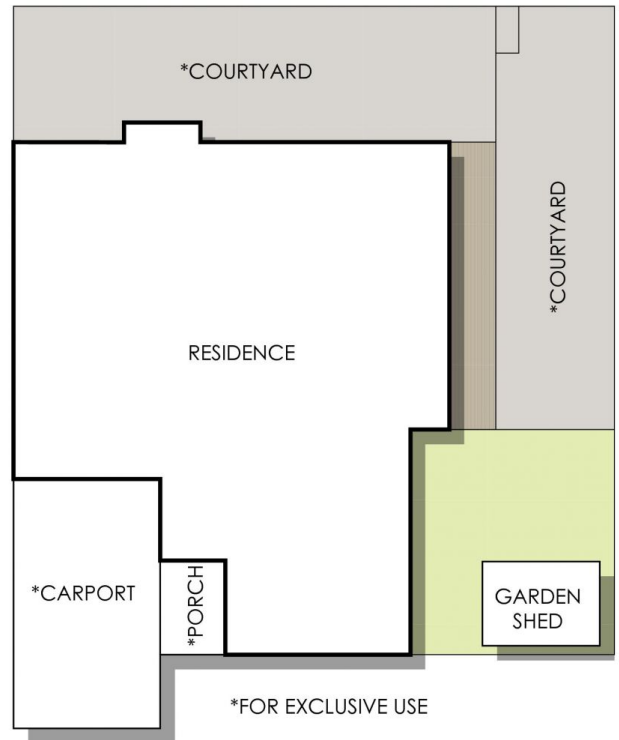
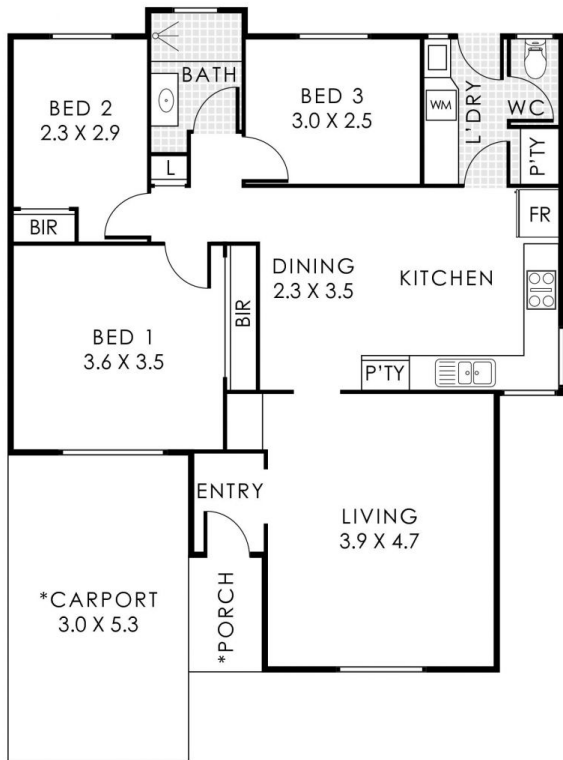
Price : Offers above \$780,000

View : <https://www.abelproperty.com.au/8688510>



Brett van Son
08 9208 1999

[For full version visit the website](https://www.abelproperty.com.au)



7/4 Lee Place, Noranda

Residence 93m² | *Porch 3m² | *Carport 16m²

Total Area 112m²



This floorplan is for illustration purposes only to show the layout of the property. Whilst every effort has been made to ensure the accuracy of the floor plan, all measurements, and any other information shown are on approximate presentation only. Measurements and total areas do not include or account for wall thickness or roof area under eaves. Cdb Creative will not be held liable or responsible for any error, omission, misrepresentation or use of any information shown on the final floor plan. Not to be used for any other purpose. www.cdbcreative.com.au