



**317/7 Wunderlich Road Subiaco WA**

1 1 1

Rising in the heart of vibrant Subiaco, the brand-new "Orchard Terrace" complex is a statement in modern urban luxury, masterfully brought to life by the award-winning Blaq Projects.

With its striking architectural presence, lush resort-style rooftop retreat and premium designer finishes, this landmark address is destined to become one of Perth's most coveted places to live. The building's bold façade makes an unforgettable first impression, where dramatic architectural lines are softened by a rich palette of concrete, stone, timber and lush greenery, all framed by deep, sculptural balconies.

Call "Orchard Terrace" home by securing this stunning

[For full version visit the website](https://www.abelproperty.com.au/86878)

**Type** : Apartment  
**Price** : Offers low to mid \$700,000  
**Building Size** : 53 sqm  
**View** : <https://www.abelproperty.com.au/86878>  
32

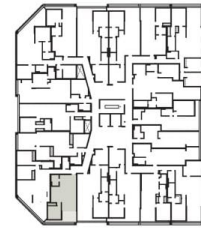


**Ryan Abel**  
08 9208 1999

APARTMENT TYPE

A5 1X1

APT.	INTERNAL	BALCONY	TOTAL	CAR BAYS*
317	53m <sup>2</sup>	9m <sup>2</sup>	62m <sup>2</sup>	1 bay



- F Fridge
- P Pantry
- S Storage
- L Linen cupboard
- B Broom cupboard
- WIR Walk-in-robe

**DISCLAIMER:** Variations from strata plans may apply. Loose furniture is indicative only. Shape and configuration of living areas, balconies, wall structure, doors, windows, columns, air-conditioning condensers and ducts may differ from those illustrated. Apartment areas given are based on strata measurements which may vary from architectural areas as different methods of measurement are applied. \* 2 (L) – one long car bay which is larger than standard size and can fit two mid-sized cars, 4 (L) – two long car bays which are larger than standard size and each can fit two mid-sized cars.