



8/4 Wooramel Way Nollamara WA

2  1  1 

All offers to be presented by Tuesday, 10 February at 4:30pm.

Step into this well-presented two-bedroom, one-bathroom apartment, where modern design meets everyday comfort. Built in 2016 and positioned within a small boutique complex, this home offers a practical, low-maintenance lifestyle with excellent convenience.

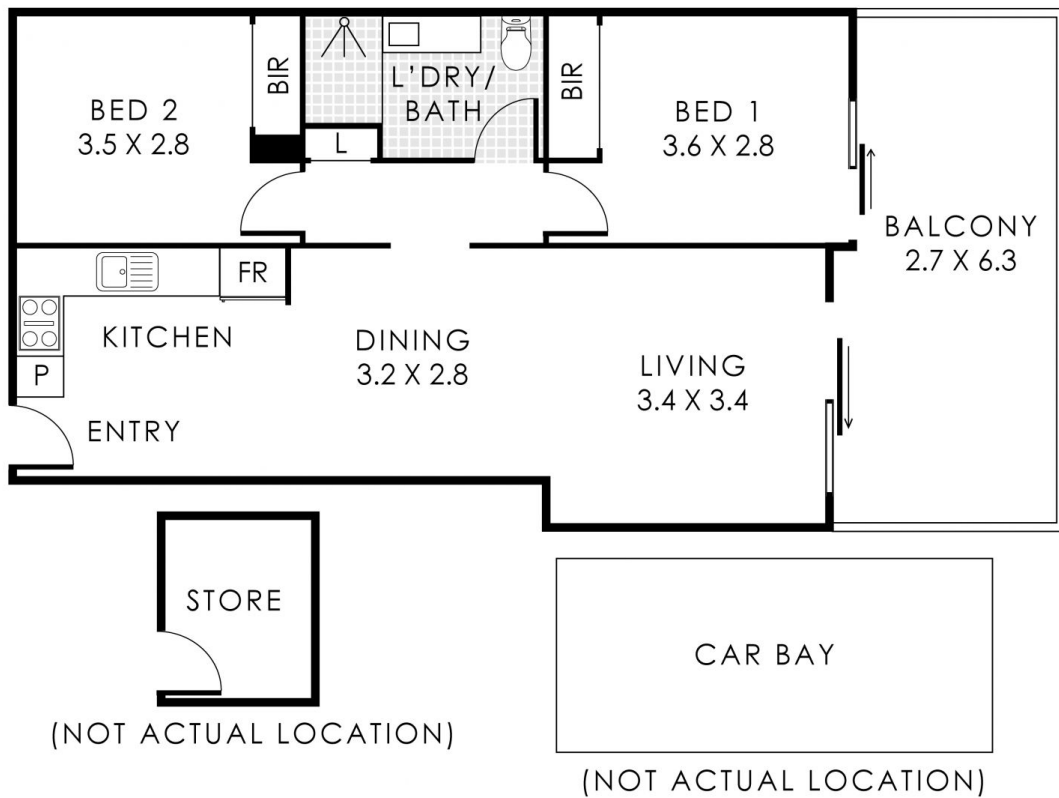
The open-plan living and dining area is complemented by reverse-cycle air conditioning, flowing seamlessly to a spacious covered balcony - ideal for entertaining. The stylish kitchen features stone benchtops, timber flooring, quality appliances, ample cupboard space and tiled splashback, making it both functional and appealing. Both bedrooms are well sized and include sliding mirrored

Type : Apartment
Building Size : 62 sqm
Land Size : 93 sqm
View : <https://www.abelproperty.com.au/8613968>



Marius Bonev
08 9208 1999

[For full version visit the website](https://www.abelproperty.com.au)



Unit 8/4 Wooramel Way, Nollamara

Residence 59m² | Balcony 17m² | Store 4m² | Car Bay 13m²

Total Area 93m²



This floorplan is for illustration purposes only to show the layout of the property. Whilst every effort has been made to ensure the accuracy of the floor plan, all measurements, and any other information shown are an approximate interpretation only. Measurements and total areas do not include or account for wall thickness or roof overhangs. C&B Creative will not be held liable or responsible for any error, omission, misrepresentation or use of any information shown on the floor plan. Not to be used for any other purpose. www.candbcreative.com.au