

107 Second Avenue Mount Lawley WA

3  1  2 

The property is being sold via Expression of Interest, with all offers presented and closing on 28th October at 4:00 p.m.WST. The owner has the right to accept an offer prior.

From the moment you step through the front gate, this iconic heritage home will have your heart.

Set on a prominent 467sqm corner block, this instantly recognisable home is a true Mount Lawley landmark. With its gabled portico, sweeping verandah and striking heritage façade, it has long been admired as part of the suburb's rich architectural streetscape.

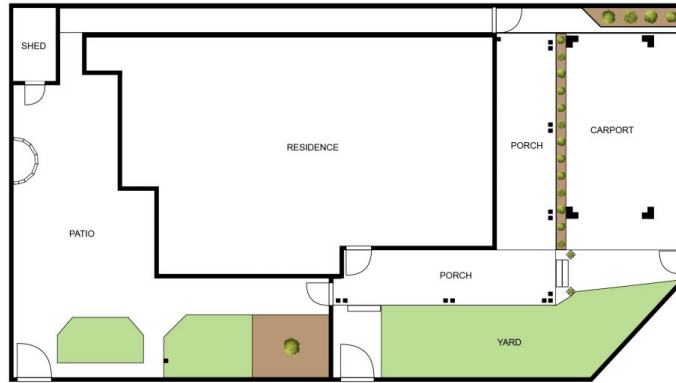
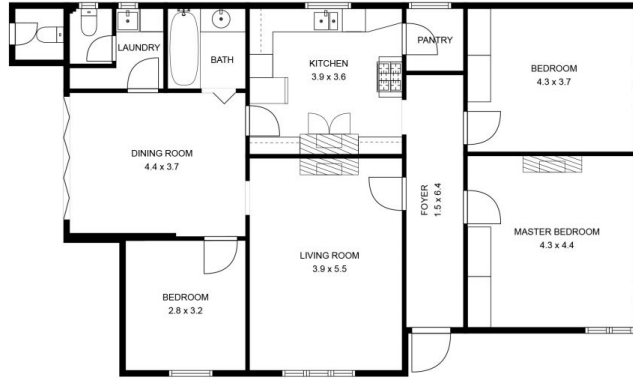
Inside, the home retains its timeless charm, brimming with

[For full version visit the website](https://www.abelproperty.com.au/8518899)

Type : House
Building Size : 125 sqm
Land Size : 467 sqm
View : <https://www.abelproperty.com.au/8518899>



Jason Ryan
08 9208 1999



107 Second Avenue, Mount Lawley

Internal Living Area	125m ²
External Area	342m ²
Total Area	467m²

This floorplan is for illustrative marketing purposes only. All measurements are approximate and subject to variation.
www.keestry.com