






104 Chelmsford Road Mount Lawley WA

5  2  2 

****The property is being sold via Expression of Interest, with all offers presented and closing on 26th August at 4:00 p.m.WST. The owner has the right to accept an offer prior.****

Type : House
Land Size : 264 sqm
View : <https://www.abelproperty.com.au/8452400>

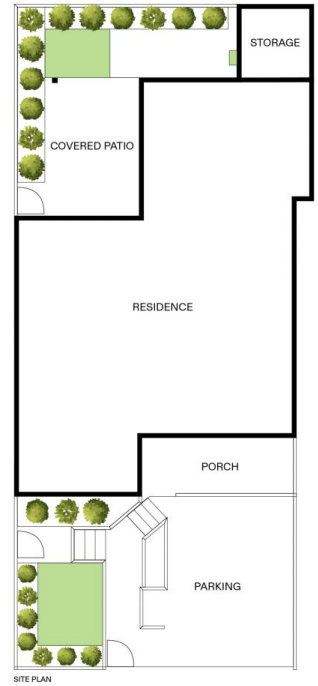
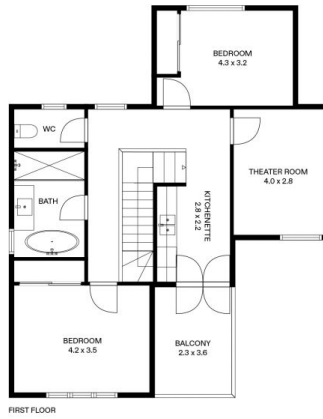
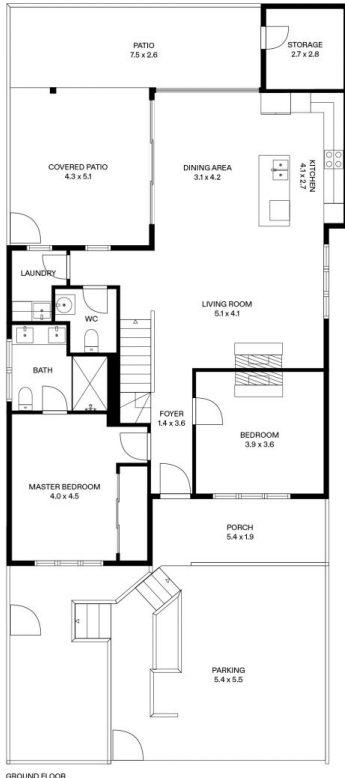
With Hyde Park just around the corner, and the cafés of Beaufort Street just a short stroll away, this grand Federation home offers the kind of lifestyle few properties can match - elegant, low-maintenance living with space, character and every modern convenience.

Painstakingly renovated to preserve its original features, while introducing high-end, functional upgrades throughout, this five-bedroom, 2.5-bathroom residence is ready for a new family to move in and enjoy.



Jason Ryan
08 9208 1999

[For full version visit the website](https://www.abelproperty.com.au)



104 Chelmsford Road, Mount Lawley

Internal Living Area	202m ²
External Area	62m ²
Total Area	264m²

This floorplan is for illustrative marketing purposes only. All measurements are approximate and subject to variation.
www.keestry.com