

314A Grand Promenade Dianella WA

3 1 2

This isn't just a house—it's the perfect fusion of timeless craftsmanship and modern luxury. From the moment you arrive, you'll feel the rock-solid sturdiness of a classic home, seamlessly transformed into a contemporary masterpiece. Every inch of this property has been meticulously renovated with a level of care and detail that makes it simply move-in ready.

? Highlights You'll Love:

Modern Marvel: New electrical switches and wiring throughout, ensuring ultimate safety and convenience.

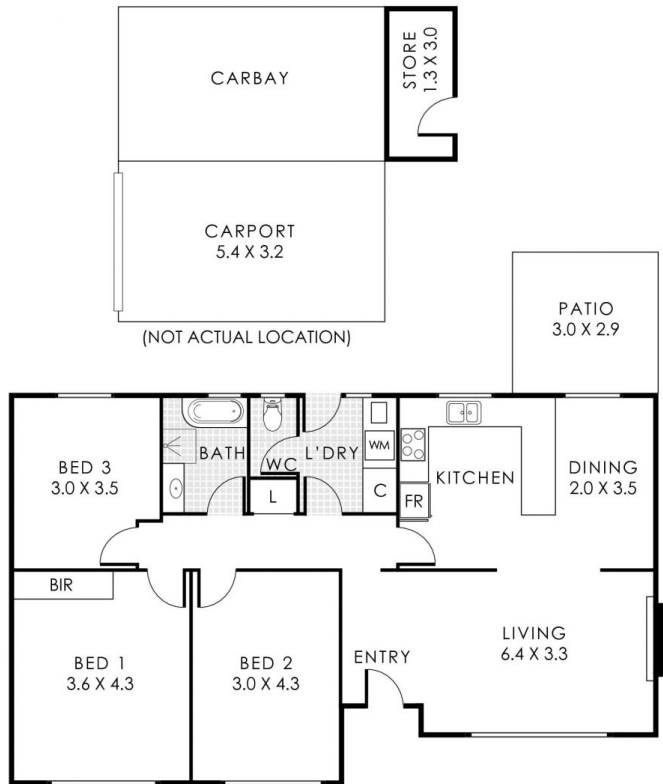
Perfect Comfort: Fully insulated for year-round comfort.

Type : House
Land Size : 420 sqm
View : <https://www.abelproperty.com.au/8249445>



Brett van Son
08 9208 1999

[For full version visit the website](https://www.abelproperty.com.au)



314A Grand Promenade, Dianella

Residence 100m² | Patio 9m² | Store 4m² | Carport 18m² | Carbay 17m²

Total Area 148m² | Total Strata Lot 420m²



This floorplan is for illustration purposes only to show the layout of the property. Whilst every effort has been made to ensure the accuracy of this floor plan, all measurements, and any other information shown are on approximate representation only. Measurements and total areas do not include or account for wall thickness or roof area under eaves. Cdb Creative will not be held liable or responsible for any error, omission, misrepresentation or use of any information shown on the final floor plan. Not to be used for any other purpose. www.cdbcreative.com.au