



170 Alma Road North Perth WA

Lot 2 - UNDER OFFER

Lot 3 - UNDER OFFER

With titles nearly issued these two lots provide a great opportunity to secure a premium and affordable building block and start designing your dream home.

Located in the heart of North Perth and surrounded by landmark heritage homes intermixed with an array of modern inner-city residential homes designed by some of Perth's leading architects. These sites provide unique 3 street access and flexible design options.

Super quiet, private and convenient location offering easy access to North Perth's best parks, shops, cafes, and

Type : Land

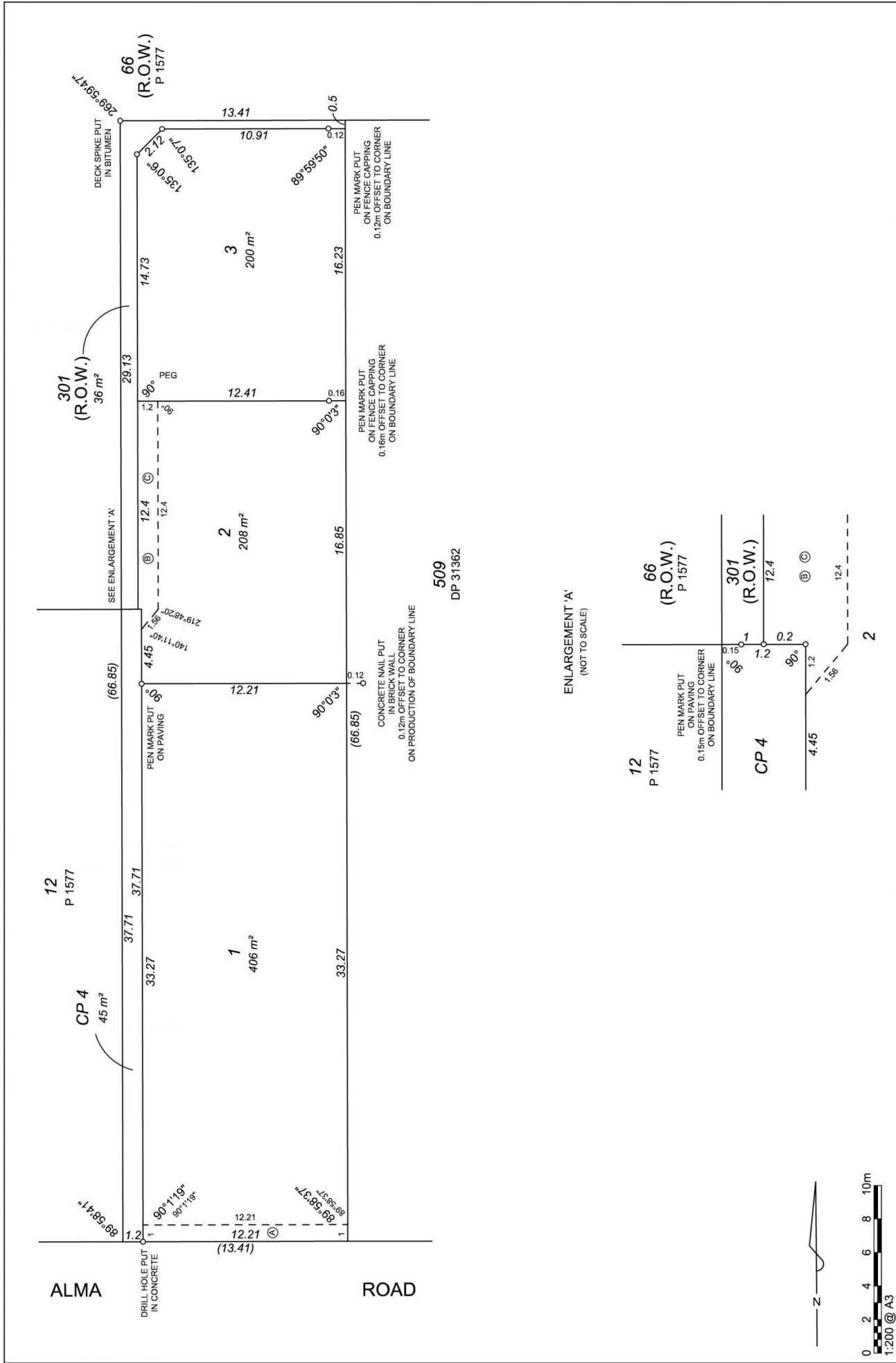
Land Size : 208 sqm

View : <https://www.abelproperty.com.au/8215633>



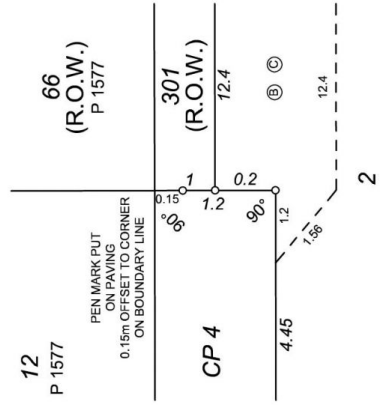
Jon Bahen
(08) 9208 1999

[For full version visit the website](https://www.abelproperty.com.au)



509
DP 31362

ENLARGEMENT 'A'
(NOT TO SCALE)



ADDITIONAL SHEETS	SHEET	SHEETS	VERSION NUMBER	SURVEY-STRATA PLAN
	2	2	1	88668




PLANNING | SPATIAL | DELIVERY
 Subject to material change and WAP approval. LODGED 05-NOV-24