



4/5 Leslie Place Tuart Hill WA

3 2 2

Welcome to this delightful home, versatile for first-home buyers, downsizers, families, or investors! Thoughtfully designed with multiple living areas, this property creates a warm and inviting atmosphere, making it an ideal space to relax and enjoy.

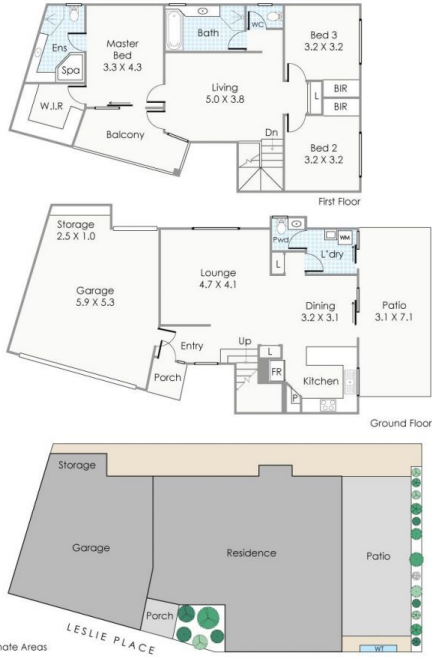
Step into the modern kitchen, complete with solid timber flooring, a plumbed fridge, gas cooking facilities, and a convenient breakfast bar. Ample storage and quality finishes make this kitchen both stylish and practical. The open-plan area downstairs enjoys year-round comfort with a split-system air conditioning unit, while electric shutters and roller blinds throughout provide enhanced privacy and comfort.

Type : Villa
Price : UNDER OFFER...
Building Size : 167 sqm
Land Size : 284 sqm
View : <https://www.abelproperty.com.au/8173301>



Dominic Ferraro
08 9208 1999

[For full version visit the website](https://www.abelproperty.com.au)



Approximate Areas

Ground Floor:	71m ²
First Floor:	96m ²
Garage:	38m ²
Store:	2m ²
Patio:	22m ²
Balcony:	10m ²
Porch:	3m ²
Total Area:	242m²

The Applicant for this plan assumes only to show the layout of the property. While every effort has been made to ensure the accuracy of the floor plan, all measurements are only approximate. Measurements are approximate. Measurements are not to be used as a basis of any contract or other legal proceedings. The Applicant will not be liable or responsible for any errors, omissions or inaccuracies in or out of any information shown on the floor plan. Plans to be used for any other purpose.

4/5 Leslie Place, Tuat Hill