



1 Alma Road Mount Lawley WA

3 2 2

Very rarely do you get the opportunity to purchase a modern day home with endless character. Architecturally designed the owner built this magnificent home in 2001 capturing the original character of the 1950's.

Magnificent jarrah floors, picture rail, ornate ceilings and leadlight windows are the main features of this spectacular home.

Open Plan living with grand entertainers kitchen for all the family to enjoy.

Three double bedrooms with master bedroom having its own private balcony with beautiful city views.

No expense has been spared to capture the original character.

Set on an easy care block, the outside entertaining area allows the owner a easy care lifestyle whilst enjoying all the

Type : House
Price : All Offers from \$1,699,000
Land Size : 292 sqm
View : <https://www.abelproperty.com.au/8096524>

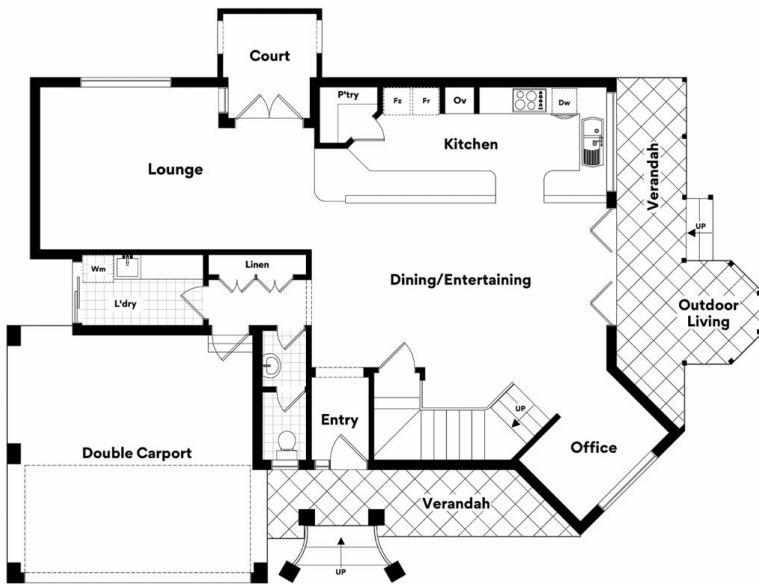


Tino Bruzese
08 9208 1999

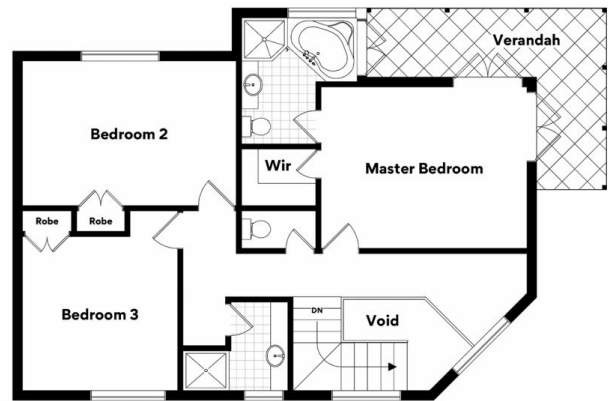


Dalila Pidone
08 9208 1999

[For full version visit the website](https://www.abelproperty.com.au)



GROUND LEVEL



UPPER LEVEL

1 Alma Road, Mt Lawley

Whilst every attempt has been made to ensure the accuracy of the floorplans contained here, measurements of doors, windows and rooms are approximate and no responsibility is taken for any error, omission or misstatement. These plans are for representation purposes only.