



87A Stuart Street Maylands WA

3 2

House & Land Available - Call for details.

Build the home of your dreams in an idyllic location on the border of Inglewood - that offers convenience and lifestyle.

Nestled amongst quality family homes, and accessible only by a rear right-of-way, privacy and serenity is on the cards here.

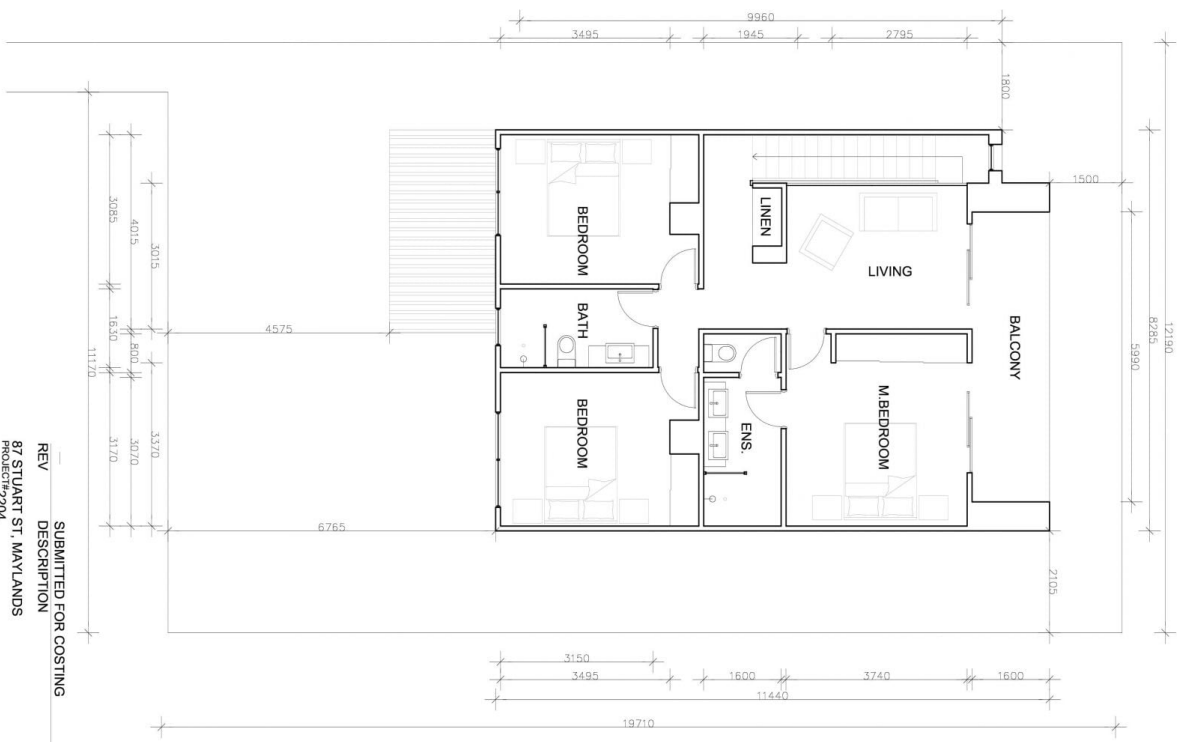
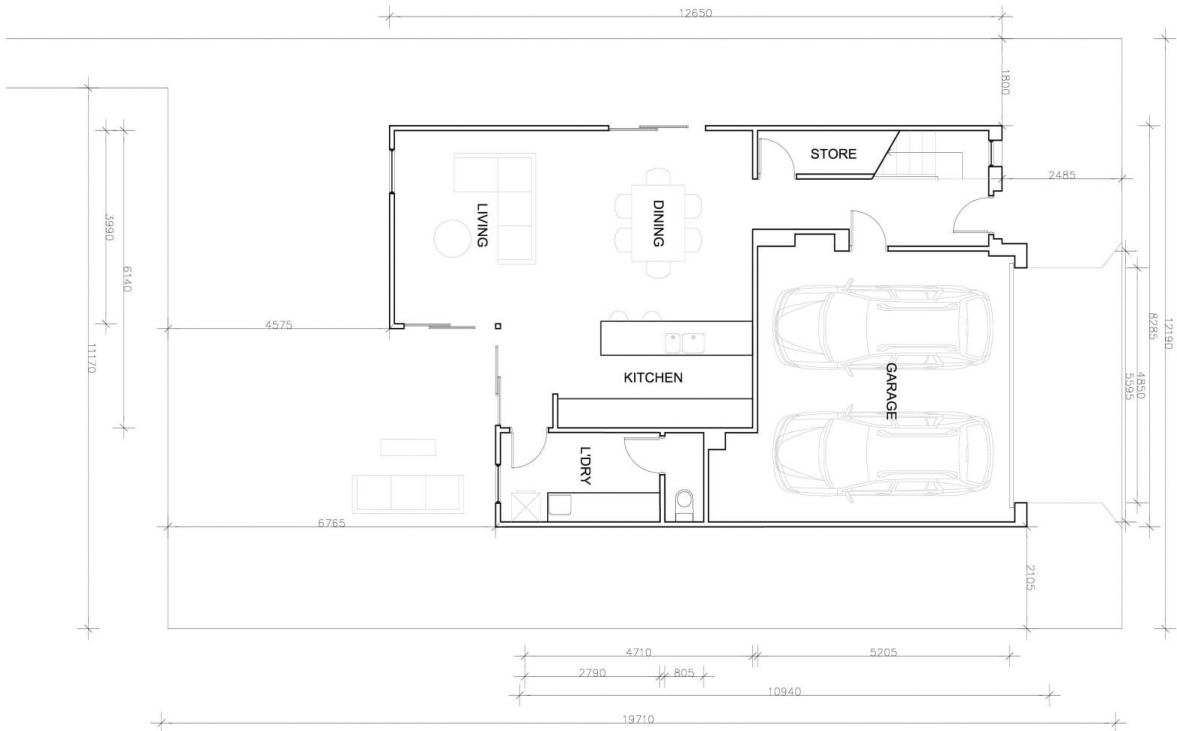
With 267sqm on offer, you can build a wonderful abode on a low-maintenance lifestyle lot - and enjoy York Reserve just a few minutes walk down the street - lush lawns without the watering, weeding or mowing! This is a location that is hard to beat. Stroll to parks, restaurants and cafes, enjoy a breezy commute with easy

Type : House
Land Size : 267 sqm
View : <https://www.abelproperty.com.au/8005724>



Jenna Abel
08 9208 1999

[For full version visit the website](https://www.abelproperty.com.au)



17/11/22
 DATE

17/11/22
 SUBMITTED FOR COSTING

87 STUART ST, MAYLANDS
 PROJECT 2204
 DESCRIPTION

REV

PLAN 1:100

